



Safety Key Points for Trades



Safety Starts With Me

Lift Mechanic

Work at height

1. Before working in the lift shaft, the worker must attach the lanyard of the safety harness together with the fall arrest device to the independent lifeline.
2. Before entering the lift shaft, ensure that no other workers are working on the upper and lower floors. Cross-operation is prohibited.
3. Discuss with the main contractor regarding the construction of scaffolds and the transportation of large components of the lift as soon as possible. Do not dismantle the scaffolding parts in the lift shaft.
4. Hand tools shall be attached with hand straps to prevent the object from falling.



Lift works

1. Entering the lift shaft without permission is strictly prohibited. For anyone working in the lift shaft, he/she must apply for a Permit-to-Work from the responsible person.
2. The lift shaft gate shall be kept closed and locked.
3. Properly maintain the lift shaft platforms, conduct cleaning regularly and prevent debris from hoarding.
4. Use proper communication equipment like walkie-talkie.
5. Prior to performing hot work, the worker must first apply for a hot work permit and comply with relevant safety requirements for fire prevention.

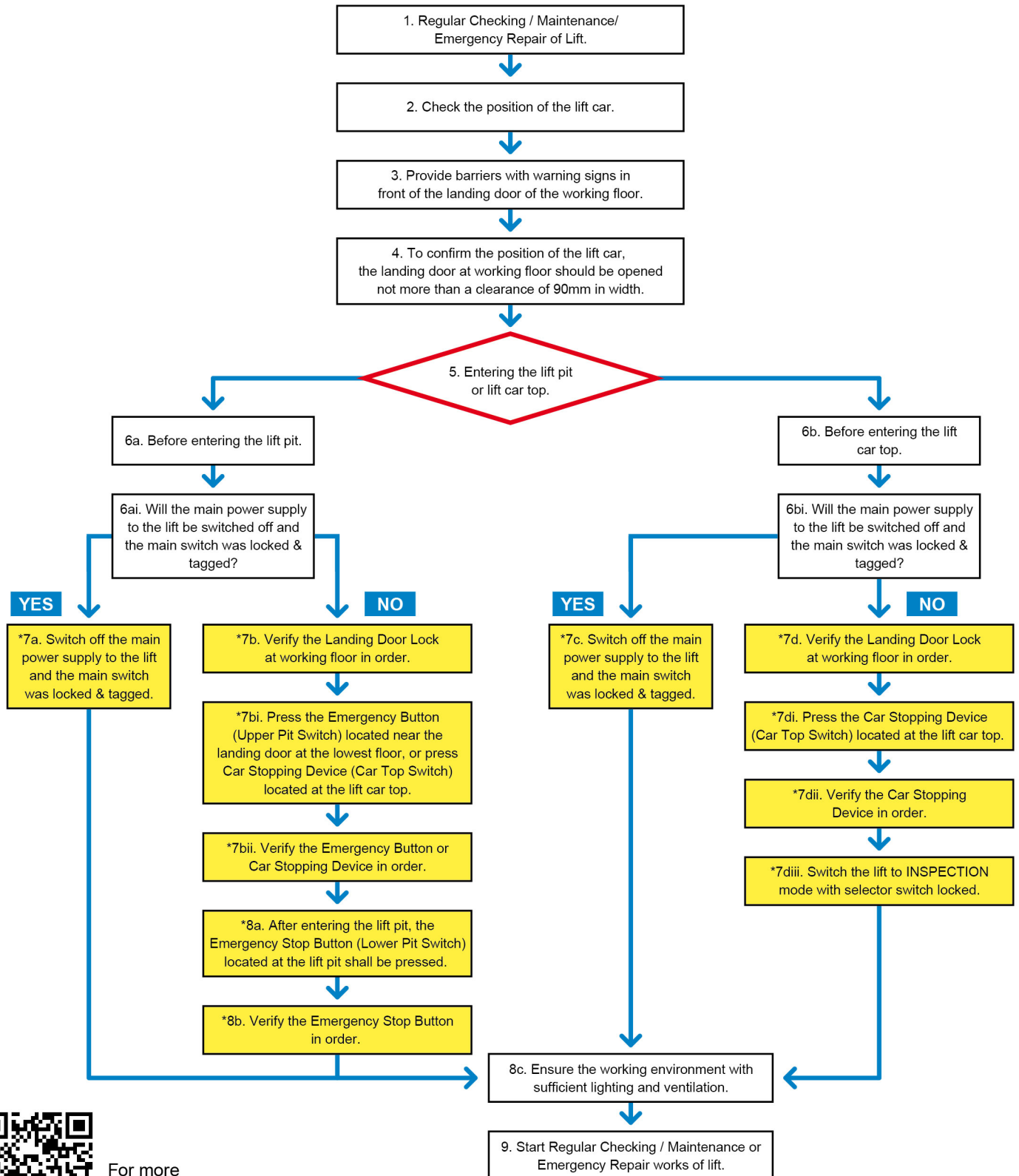


Lifting of materials

1. Lifting appliances and lifting gear shall be tested and thoroughly examined by a competent examiner, and a valid certificate in the approved form in which the competent examiner has made a statement to the effect that it is in safe working order has been obtained.
2. Subsequent to major repairs and repositioning, the lifting appliances shall be tested and thoroughly examined by a qualified examiner, and a valid certificate in the approved form in which the competent examiner has made a statement to the effect that it is in safe working order has been obtained.
3. Check the lifting appliances and lifting gear being used on a daily basis to ensure no abnormal wear and tear, visible cracks, extension and loosening, etc. before use.
4. Use suitable lifting gear and rigging methods to lift materials.



Entering Lift Shaft Safe Working Procedure Flow Chart



For more
Safety Information
Please scan QR Code

Copyright

All contents of this document belong to the Construction Industry Council (CIC) / Hong Kong Institute of Construction (HKIC) and are protected by copyright.

Disclaimer

Whilst reasonable efforts have been made to ensure the accuracy of the information contained in this document, the CIC/ HKIC nevertheless would encourage readers to seek appropriate independent advice from their professional advisers where possible and readers should not treat or rely on this publication as a substitute for such professional advice for taking any relevant actions. For any enquiry, please contact 2100 9000.